

Low-Noise Type Duct Ventilating Fan 静音型管道送风机

The low-noise type duct ventilating fan is an ideal equipment for ventilation in houses, villas, offices, conference rooms, shopping malls, hotels, restaurants and other public places.

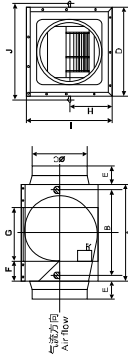
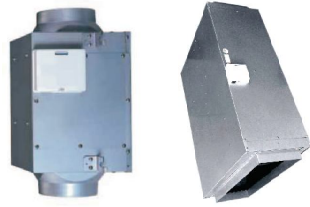
It can be efficiently used with connection to ducts for air supply and exhaust, perfectly keeping the indoor air clean and fresh.

The low-noise type duct ventilating fan inlet and outlet makes installation with ducts much more easier and more space-saving and even extremely lower noise.

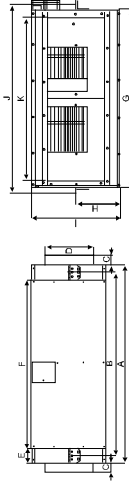
静音型管道送风机是现在居住场所必备的通风设备，它能有效地进行送风换气，令室内空气清新、干净、适用于家庭、别墅、办公楼、会议室、商场、宾馆、酒楼或公共娱乐场所等。

静音型管道送风机设计进出风接口为直出直入方式，不需弯曲，故安装方便、外形美观，占空极少、噪音低。

External Dimensions 外形尺寸图



DPT型号



DKT型号

Dimension Table 尺寸表

型号 Model No.	A	B	C	D	E	F	G	H	I	J	K	风口尺寸 Duct Size (mm)
DPT10-12B	340	298	95	240	65	68	210	100	200	265	/	Φ100
DPT10-23B	340	298	95	240	65	68	210	100	200	265	/	Φ100
DPT15-32B	340	298	150	240	75	53	230	120	240	285	/	Φ150
DPT15-42B	390	348	150	270	75	58	265	140	280	315	/	Φ150
DPT20-54B	420	376	200	340	85	64	285	140	290	385	/	Φ200
DPT20-64C	480	448	200	370	85	58	304	160	320	415	/	Φ200
DPT20-66B	520	478	200	400	85	74	344	182.5	365	445	/	Φ200
DPT25-76B	590	548	250	400	75	74	364	190	380	445	/	Φ250
DPT25-76C	590	548	250	400	75	74	364	190	380	445	/	Φ250
DPT25-86C	660	618	250	480	75	107	375	210	420	525	/	Φ250
DPT25-86B	660	618	250	480	75	107	375	210	420	525	/	Φ250
DKT25-400C	1016	942	49	246	76	864	764	190	380	805	496	496 x 246
DKT25-500C	1016	942	49	246	76	864	764	190	380	805	696	696 x 246

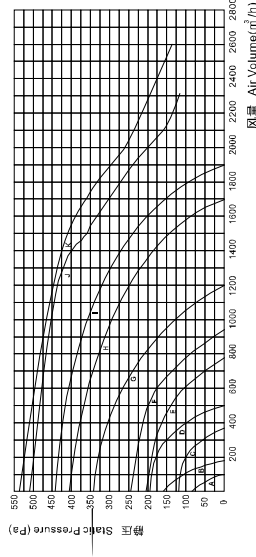
Units 单位:mm

Low-Noise Type Duct Ventilating Fan 静音型管道送风机

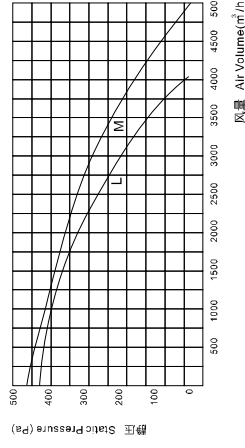
Electrical Ratings 技术参数

型号 Model No.	额定电压/频率/相数 Rated Voltage/Frequency/Phase	风轮直径 Impeller Diameter (mm)	功率 Power (W)	转速 Speed (R.P.M.)	风量 Volume (m ³ /h)	静压 Pressure (Pa)	噪音 (dB)	电机绝缘等级 Insulation Class	净重 Weight (kg)
DPT10-12B	220V~50Hz/1Ph	120	20	900	100	80	20		5.40
DPT10-23B		120	37	1350	180	163	23		5.40
DPT15-32B		150	55	1240	360	116	27		7.30
DPT15-42B		180	125	1360	500	191	29		9.40
DPT20-54B		180	157	1248	770	204	35		10.50
DPT20-64C		200	187	1250	920	249	37		15.00
DPT20-65B		230	275	1270	1200	348	41	E	19.00
DPT25-76B		250	405	1040	1700	404	43		25.50
DPT25-76C		250	535	1200	1800	440	46		25.50
DPT25-86C		280	780	1370	2310	518	46		30.80
DKT25-400C	380V~50Hz/3Ph	280	800	1380	2600	536	46		30.80
DKT25-500C		250	1200	1200	4000	430	48		63.40
DKT25-500C		250	1450	1200	5000	460	50		63.40

Performance Curve 性能曲线图



- A: DPT10-12B
- B: DPT10-23B
- C: DPT15-32B
- D: DPT15-42B
- E: DPT20-54B
- F: DPT20-54C
- G: DPT20-65B
- H: DPT25-76B
- I: DPT25-76C
- J: DPT25-86C
- K: DPT25-86B



- L: DKT25-400C
- M: DKT25-500C